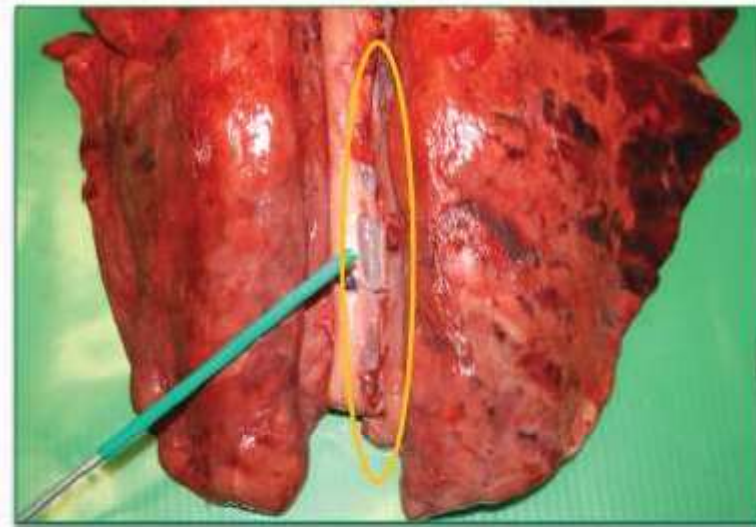
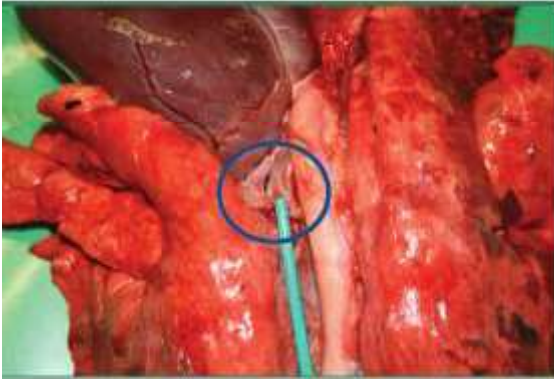
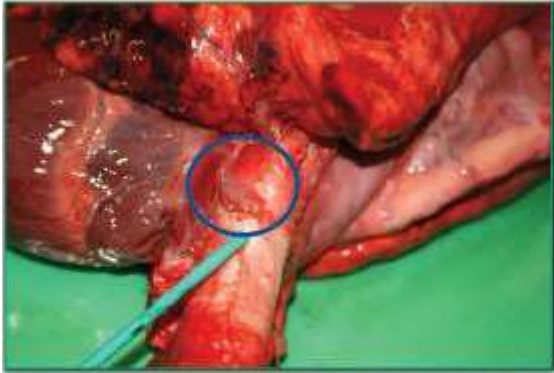


Suidi: Linfonodi Polmonari

Peribronchiali



mediastinici

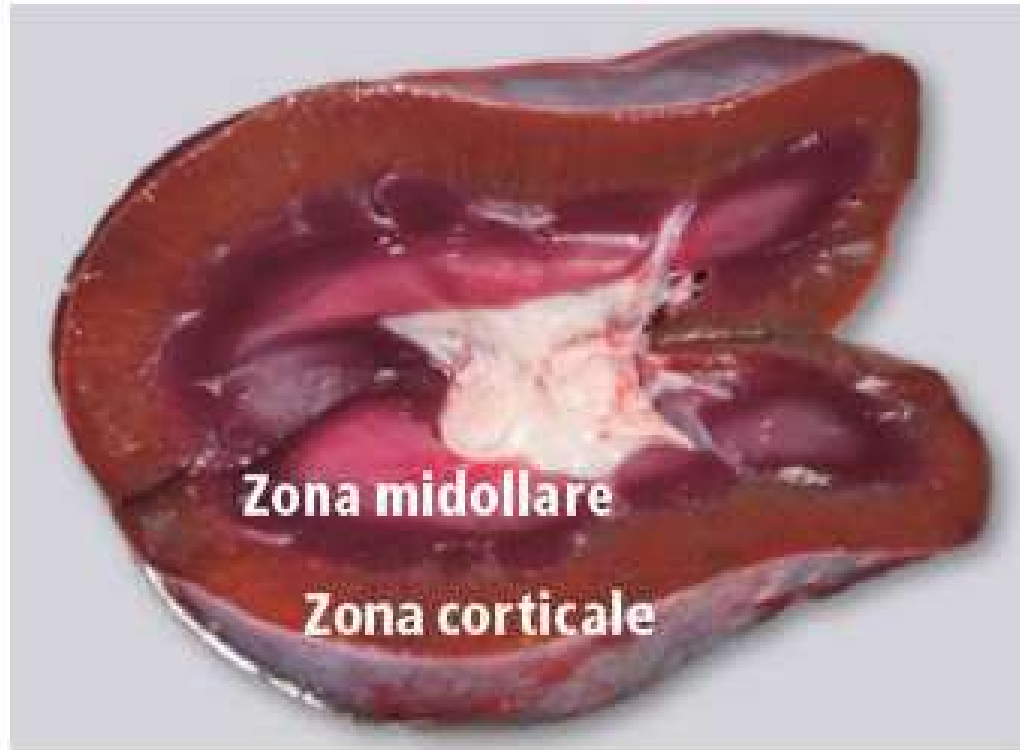
**Assenza di
anomalie/lesioni**



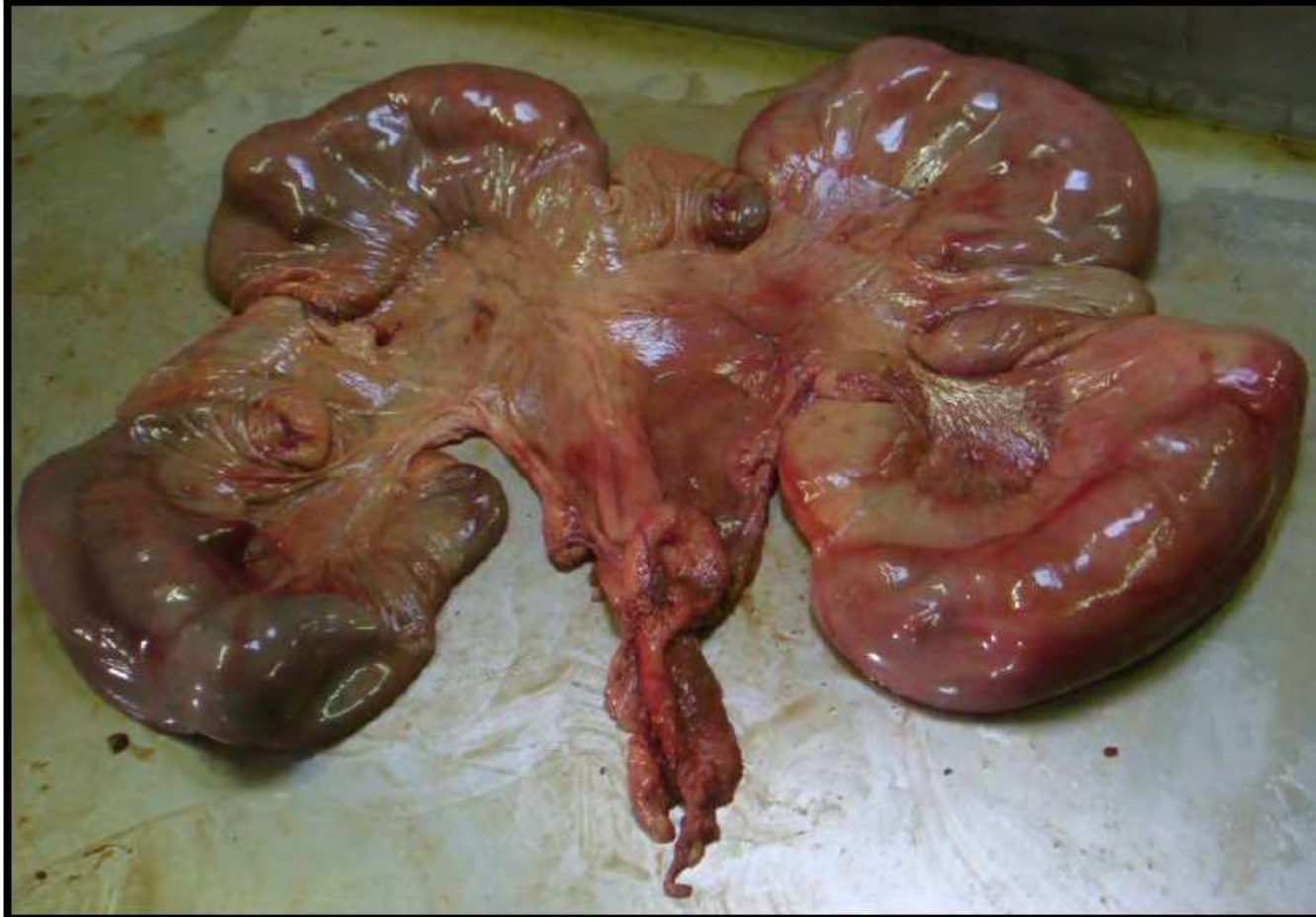
Assenza di anomalie/lesioni



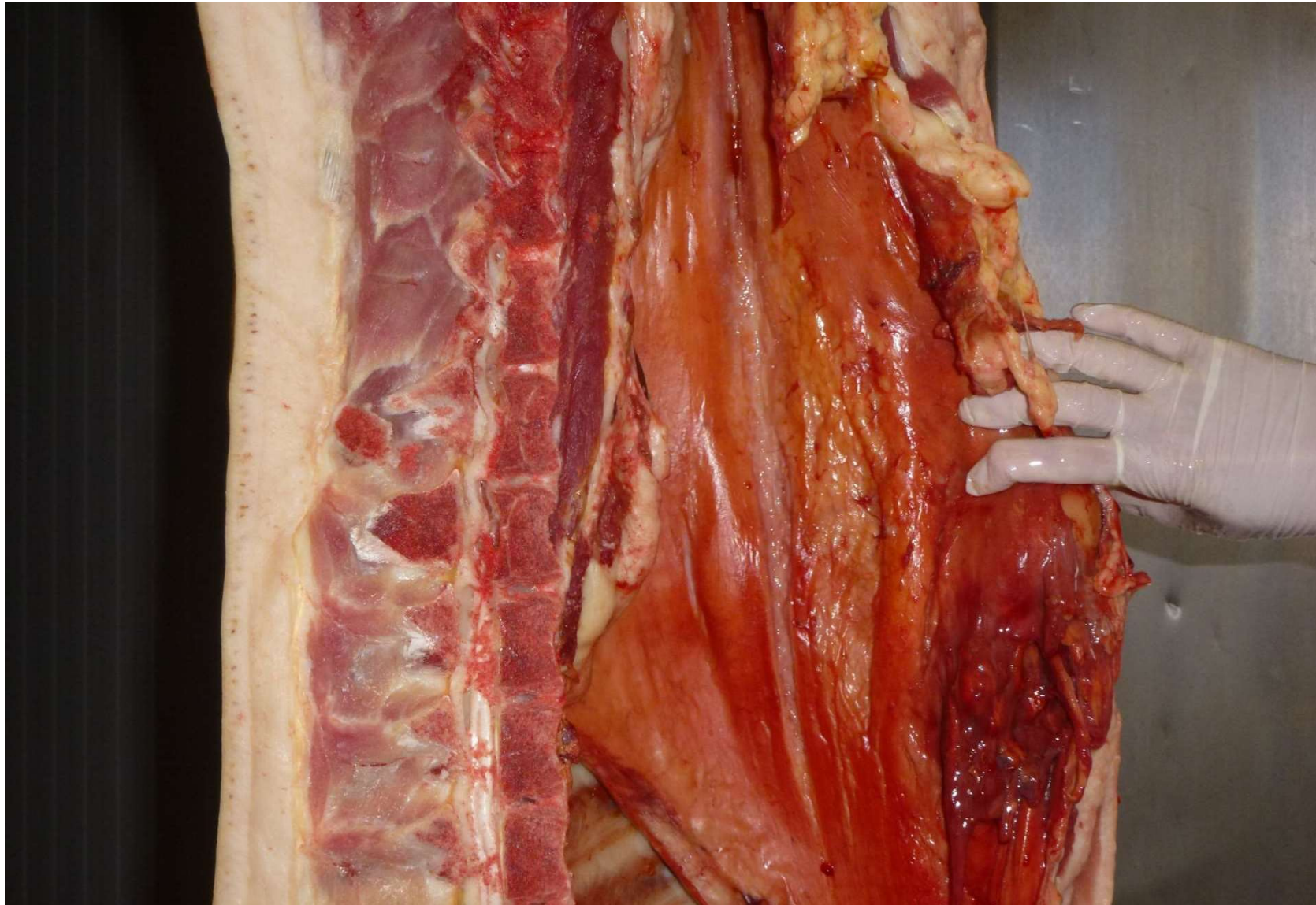
Suidi: Rene



Utero



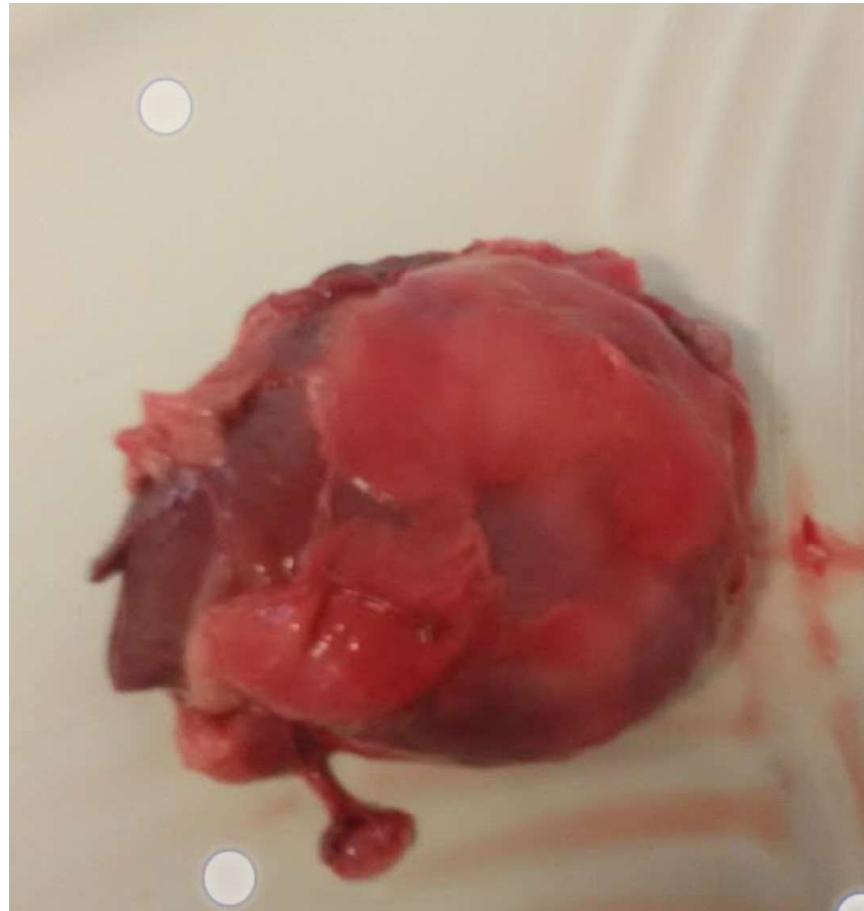
Peritonite



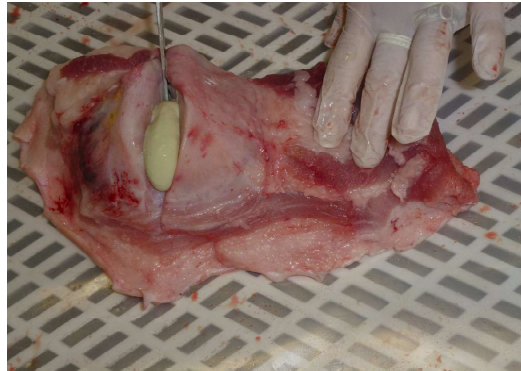


MILZA AUMENTATA DI VOLUME E CONGESTA

Pericardite



Lesioni Localizzate: ascessi



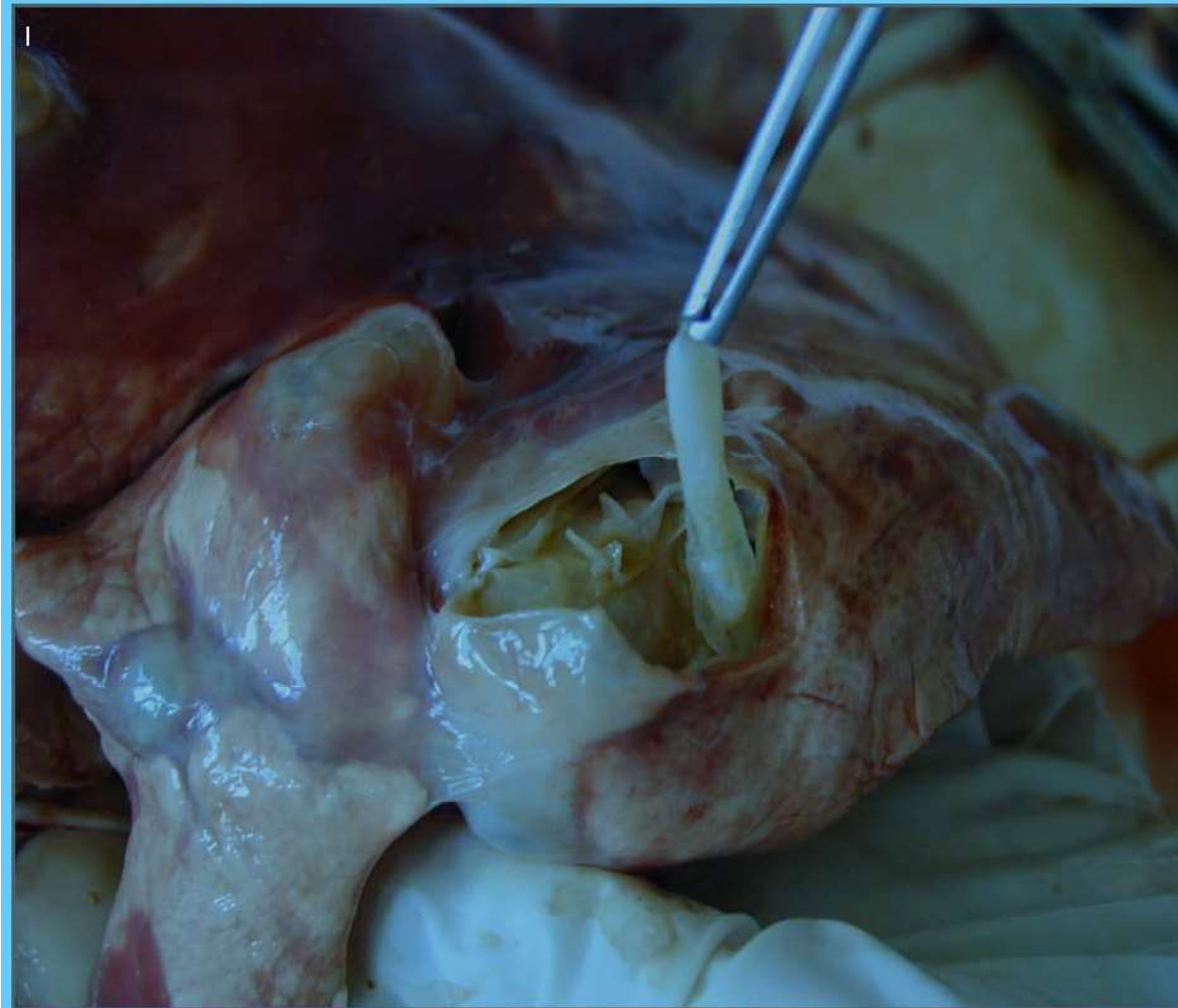
Cisti Echinococco



Echinococco



Echinococco



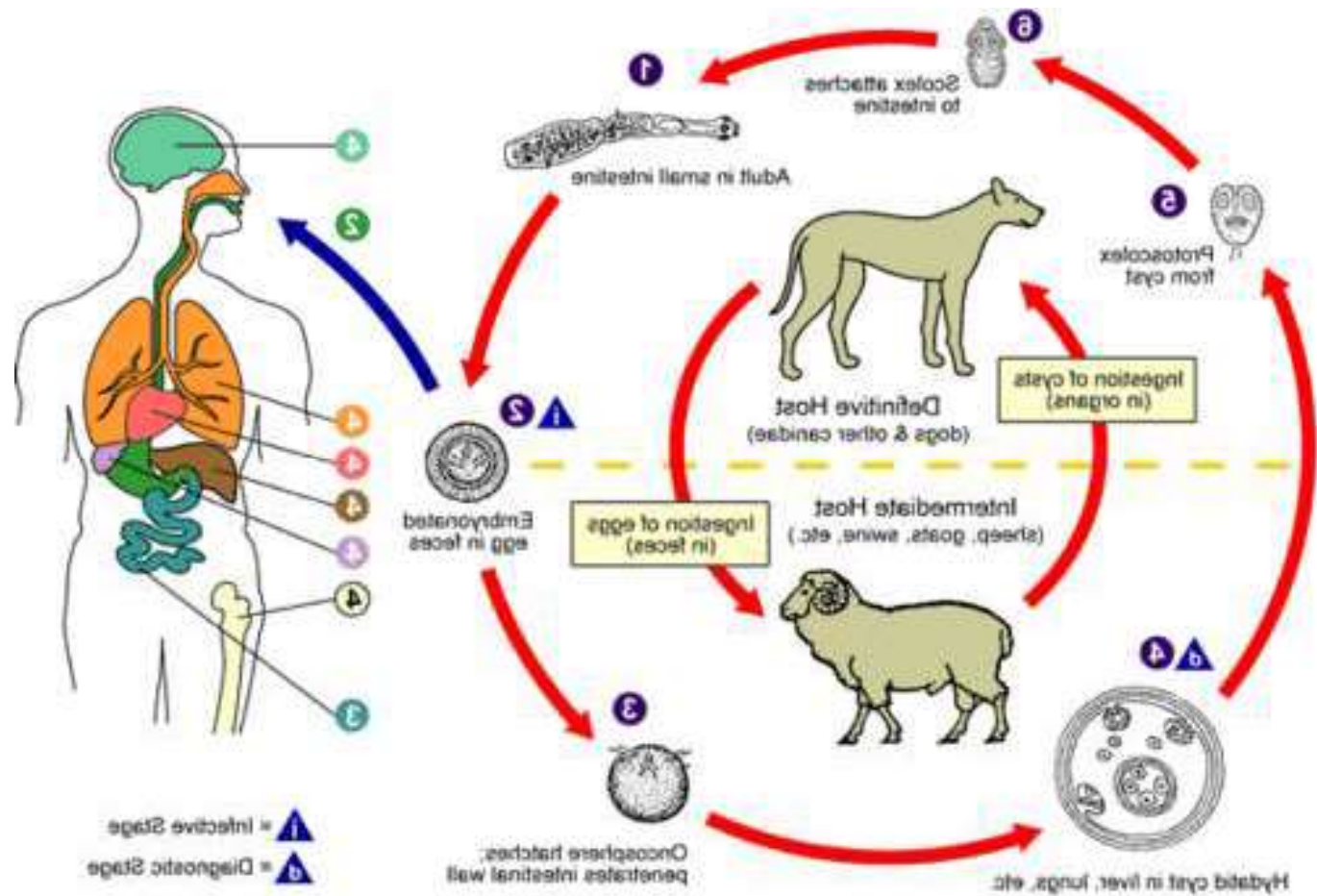
Echinococcus granulosus

Piccolo cestode

Ospiti definitivi: cane e canidi selvatici

Ospiti intermedi: ruminanti domestici e selvatici e uomo

Ciclo Echinococco



Echinococcosi nell'uomo

Disfunzioni epatiche e respiratorie



Shock anafilattico